



POWERFUL SOLUTIONS –
PASSIONATE PEOPLE




KALTENBACH

RANGE OF TOOLS

Drilling machines

KDM





RANGE OF TOOLS DRILLING MACHINE KDM

Productivity and quality are always results of optimally coordinated machines and tools. Choose the original, high-tech tools of KALTENBACH and profit from highest precision, best finish quality and maximum drilling power.

This tool catalogue highlights the original KALTENBACH drill tools for the KDM drilling machines.

In addition to this there are further tool catalogues for circular and band saws.

You can find more information on tools here:
www.kaltenbach.com

CONTENT

▶ Toolkit KDM at a glance	4
▶ Toolkit for solid carbide drills	6
▶ Toolkit for CI-drills	8
▶ Toolkit for contour-marking	12
▶ Toolkit for HSS-drills and countersinks	14
▶ Toolkit for taps	20
▶ Toolkit for milling cutters	22

TOOLKIT KDM AT A GLANCE



Drilling spindle end

1 SOLID CARBIDE DRILLS

2 CI-DRILL

3 CONTOUR MARKER

4 HSS DRILL AND COUNTERSINK

5 HSS DRILL AND COUNTERSINK

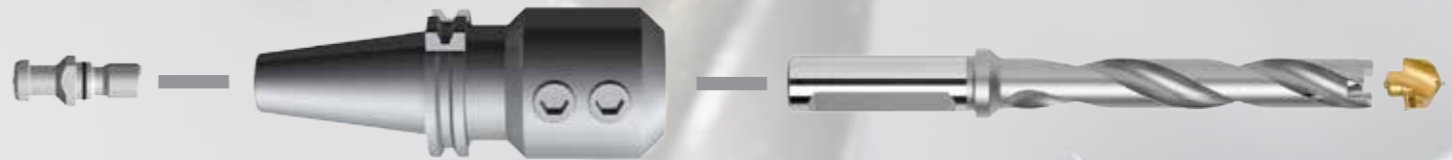
6 TAP

7 MILLING CUTTER

1



2



3



4



5



6



7



SOLID CARBIDE DRILLS



drill-Ø	pull stud A19		tool holder				solid carbide drills; with cooling duct			
		order-no.	name	A	order-no.		Ø	L	form	order-no.
6.8	8-9041-131190		SK40-WN08	200	8-9041-102082	A	6.8	8 x Ø	HE	8-9300-068081
8.0			SK40-WN08	200	8-9041-102082	A	8.0	8 x Ø	HE	8-9300-080081
8.5			SK40-WN10	200	8-9041-102102	B	8.5	8 x Ø	HE	8-9300-085081
10.0			SK40-WN10	200	8-9041-102102	B	10.0	8 x Ø	HE	8-9300-100081
10.2			SK40-WN12	200	8-9041-102122	C	10.2	8 x Ø	HE	8-9300-102081
12.0			SK40-WN12	200	8-9041-102122	C	12.0	8 x Ø	HE	8-9300-120081
13.0			SK40-WN14	200	8-9041-102142	D	13.0	5 x Ø	HE	8-9300-130051
14.0			SK40-WN14	200	8-9041-102142	D	14.0	5 x Ø	HE	8-9300-140051
15.0			SK40-WN16	200	8-9041-102162	D	15.0	5 x Ø	HE	8-9300-150051
15.5			SK40-WN16	200	8-9041-102162	D	15.5	5 x Ø	HE	8-9300-155051
16.0			SK40-WN16	200	8-9041-102162	D	16.0	5 x Ø	HE	8-9300-160051
17.0			SK40-WN18	200	8-9041-102182	E	17.0	5 x Ø	HE	8-9300-170051
17.5			SK40-WN18	200	8-9041-102182	E	17.5	5 x Ø	HE	8-9300-175051
18.0			SK40-WN20	200	8-9041-102202	E	18.0	5 x Ø	HE	8-9300-180051
19.0			SK40-WN20	200	8-9041-102202	E	19.0	5 x Ø	HE	8-9300-190051
19.5			SK40-WN20	200	8-9041-102202	E	19.5	5 x Ø	HE	8-9300-195051
20.0	SK40-WN20	200	8-9041-102202	E	20.0	5 x Ø	HE	8-9300-200051		

accessories		SW	order-no.	set screw			pin spanner	
				size	order-no.		SW	order-no.
wrench	19	7-0894-19000		M8 x 10 2x	7-0916-081000	A	4	7-0911-04000
				M10 x 12	7-0916-101200	B	5	7-0911-05000
				M12 x 16	7-0916-121600	C	6	7-0911-06000
				M14 x 16 2x	7-0916-141600	D	8	7-0911-08000
				M16 x 16 2x	7-0916-161600	E	8	7-0911-08000

CI-DRILLS



drill-Ø	pull stud A19 8-9041-131190	tool holder				drill body				cutting insert	
		name	A	order-no.		Ø	L	shaft	order-no.	Ø	order-no.
12.5	standard tools	SK-40-WN16	200	8-9041-102162	A	14.0	R5	WN16	8-9042-140050	14.0	8-9042-140000
14.0						R5	WN20	8-9042-145050	14.5	8-9042-145000	
14.5		SK40-WN20	200	8-9041-102202	B	16.0	R5	WN20	8-9042-160050	16.0	8-9042-160000
16.0						R5	WN20	8-9042-170050	17.0	8-9042-170000	
17.0						R5	WN20	8-9042-180050	18.0	8-9042-180000	
18.0						R5	WN25	8-9042-185050	18.5	8-9042-185000	
18.5		SK40-WN25	100	8-9041-102250	C	19.0	R5	WN25	8-9042-190050	19.0	8-9042-190000
19.0						R5	WN25	8-9042-200050	20.0	8-9042-200000	
20.0						R5	WN25	8-9042-210050	21.0	8-9042-210000	
21.0						R5	WN25	8-9042-220050	22.0	8-9042-220000	
22.0						R5	WN25	8-9042-230050	23.0	8-9042-230000	
23.0						R5	WN25	8-9042-240050	24.0	8-9042-240000	
24.0						R5	WN32	8-9042-250050	25.0	8-9042-250000	
25.0						R5	WN32	8-9042-260050	26.0	8-9042-260000	
26.0		SK40-WN32	100	8-9041-102320	D	26.5	R5	WN32	8-9042-265050	26.5	8-9042-265000
26.5						R5	WN32	8-9042-270050	27.0	8-9042-270000	
27.0	R5					WN32	8-9042-280050	28.0	8-9042-280000		
28.0	R5					WN32	8-9042-290050	29.0	8-9042-290000		
29.0	R5					WN32	8-9042-300050	30.0	8-9042-300000		
30.0	R5					WN32	8-9042-310050	31.0	8-9042-310000		
31.0	R5					WN32	8-9042-320050	32.0	8-9042-320000		
32.0	R5					WD50	8-9042-330050	33.0	8-9042-330000		
33.0	SK40-WD50	120	2-7935-002400-00	E	34.0	R5	WN32	8-9042-340050	34.0	8-9042-340000	
34.0					R5	WN32	8-9042-350050	35.0	8-9042-350000		
35.0					R5	WD50	8-9042-360050	36.0	8-9042-360000		
36.0					R5	WD50	8-9042-370050	37.0	8-9042-370000		
37.0					R5	WD50	8-9042-380050	38.0	8-9042-380000		
38.0					R3	WD50	8-9042-390030	39.0	8-9042-390000		
39.0					R3	WD50	8-9042-400030	40.0	8-9042-400000		
40.0					replacement tools with WN40	SK40-WN40	120	8-9041-102400	F	33.0	R5
34.0	R5	WN40	8-9042-340050	34.0						8-9042-340000	
35.0	R5	WN40	8-9042-350050	35.0						8-9042-350000	
36.0	R5	WN40	8-9042-360050	36.0						8-9042-360000	
37.0	R5	WN40	8-9042-370050	37.0						8-9042-370000	
38.0	R5	WN40	8-9042-380050	38.0						8-9042-380000	
39.0	R3	WN40	8-9042-390030	39.0						8-9042-390000	
40.0	R3	WN40	8-9042-400030	40.0						8-9042-400000	

accessories	SW	order-no.
wrench	19	7-0894-19000

accessories	size	order-no.	
set screw	M14 x 16	7-0916-141600	A
	M16 x 16	7-0916-161600	B
	M18 x 2 x 20 2x	7-0916-182030	C
	M20 x 2 x 20 2x	7-0916-202030	D
ball pressure screw	M12 x 16 x 2x	8-0043-121601	E
set screw	M20 x 2 x 25 2x	7-0916-202530	F
accessoires	SW	order-no.	
pin spanner	6	7-0911-06000	A; E
	8	7-0911-08000	B
	10	7-0911-10000	C; D; F

accessories for base body
set screw + pin spanner *

CONTOUR-MARKING



pull stud - A19		
order-no.		
8-9041-131190		

accessories	SW	order-no.
wrench	19	7-0894-19000

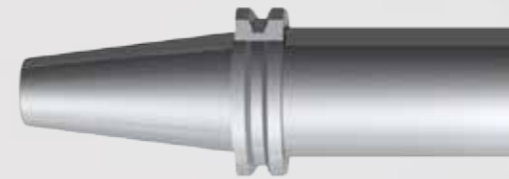
robot spindle CMT SK40		
order-no.		
8-1420-000020		

accessories	SW	order-no.
wrench	36	7-0894-36000
wrench	46	7-0894-46000
pin spanner	2.5	7-0911-025000

tapping device VHM, D=8 90°	
order-no.	
8-9300-080002	

tool	order-no.
clamping collet	8-9041-050800
wrench 17	7-0894-170000
hook wrench	8-9050-000020

HSS-DRILLS



**drill-
Ø**

3.0
3.5
5.2
6.0
7.0
10.0

pull stud - A19

order-no.

8-9041-131190

accessories

wrench

SW

19

order-no.

7-0894-19000

tool holder

order-no.

8-9041-101400

accessories

drill drift 4

MORSE

4

order-no.

W02679004

reduction sleeve

order-no.

8-9041-124200

accessories

morse taper

order-no.

W02679002

**drill chuck
Ø1mm - Ø13mm**

order-no.

8-9041-400020

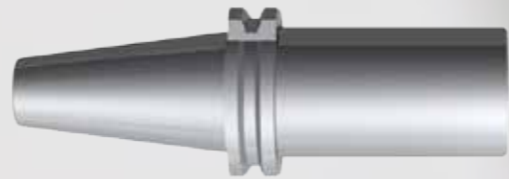
HSS-drills

Ø

order-no.

3.0	8-9303-030100
3.5	8-9303-035100
5.2	8-9303-052400
6.0	8-9303-060100
7.0	8-9303-070100
10.0	8-9303-100400

HSS-COUNTERSINKS



counter-bores-Ø	pull stud - A19		tool holder			extension to countersink				HSS-countersink				
	order-no.		order-no.			name	MK	L	order-no.	Ø	angle	MK	order-no.	
19	8-9041-131190		8-9041-101400			drill extension	4 / 2	231	W03643156	A	19	90°	2	8-9044-190200
30						drill extension	4 / 3	227	W03643124		B	30	90°	2
50						drill extension	4 / 3	227	W03643124	50		90°	3	8-9044-500300
						extension to counterbores				HSS-counterbores				
						name	MK	L	order-no.			HSS MK	order-no.	
15	8-9041-131190		8-9041-101400			drill extension	4 / 2	231	W03643156	A	15 x 9	2	8-9046-150920	
18											18 x 11	2	8-9046-181120	
20						20 x 13.5	2	8-9046-201320						
24						24 x 15.5	2	8-9046-241520						
26						26 x 17.5	3	8-9046-261730						
30	drill extension	4 / 3	227	W03643124	B	30 x 20	3	8-9046-302030						
33						33 x 22	3	8-9046-332230						
36						36 x 24	3	8-9046-362430						
40						40 x 26	3	8-9046-402630						
accessories		SW	order-no.	accessories	MORSE	order-no.	accessories	MORSE	order-no.					
wrench		19	7-0894-19000	drill drift 4	4	W02679004	drill drift 1	1 + 2	W02679002	A				
							drill drift 3	3	W02679003	B				

HSS-DRILLS



drill-Ø	pull stud - A19 order-no.	tool holder order-no.	reduction sleeve, KK=with cooling duct				HSS-drill, with cooling duct					
			KK	MK	order-no.		Ø	MK	SB	order-no.		
9/16"	8-9041-131190	8-9041-101400		4 / 2	8-9041-124200	A	9/16" x 264	2	SB	8-9040-303651		
11/16"								11/16" x 282	2	SB	8-9040-304451	
13/16"								13/16" x 306	3	SB	8-9040-305251	
15/16"								15/16" x 306	3	SB	8-9040-306051	
1 1/16"					x	4 / 3	8-9041-124300	B	1 1/16" x 385	4		8-9040-306853
1 3/16"									1 3/16" x 349	4		8-9040-307651
1 5/16"									1 5/16" x 349	4		8-9040-308451
1 9/16"									1 9/16" x 349	4		8-9040-310051
6.8									6.8 x 174	1		8-9040-106850
8.0									8.0 x 181	1		8-9040-108050
8.5						4 / 1	W03643101	A	8.5 x 181	1		8-9040-108550
9.0									9.0 x 188	1		8-9040-109050
10.0									10.0 x 233	2	SB	8-9040-310050
10.3									10.3 x 233	2	SB	8-9040-310350
11.0									11.0 x 242	2	SB	8-9040-311050
11.5									11.5 x 242	2	SB	8-9040-311550
12.0									12.0 x 251	2	SB	8-9040-312050
12.5									12.5 x 251	2	SB	8-9040-312550
13.0					x	4 / 2	8-9041-124200	A	13.0 x 251	2	SB	8-9040-313050
14.0							14.0 x 259	2	SB	8-9040-314050		
14.5							14.5 x 264	2	SB	8-9040-314550		
15.0							15.0 x 264	2	SB	8-9040-315050		
16.0							16.0 x 270	2	SB	8-9040-316050		
17.0							17.0 x 244	2	SB	8-9040-317050		
18.0							18.0 x 282	2	SB	8-9040-318050		
18.5							18.5 x 307	3	SB	8-9040-318550		
19.0							19.0 x 307	3	SB	8-9040-319050		
20.0							20.0 x 313	3	SB	8-9040-320050		
21.0							21.0 x 320	3	SB	8-9040-321050		
22.0							22.0 x 327	3	SB	8-9040-322050		
22.5			x	4 / 3	8-9041-124300	B	22.5 x 334	3	SB	8-9040-322550		
23.0							23.0 x 334	3	SB	8-9040-323050		
24.0							24.0 x 342	3	SB	8-9040-324050		
25.0							25.0 x 342	3	SB	8-9040-325050		
26.0							26.0 x 350	3	SB	8-9040-326050		
26.5							26.5 x 350	3	SB	8-9040-326550		
27.0							27.0 x 349	4		8-7914-270349		
28.0							28.0 x 349	4		8-7914-280349		
29.0							29.0 x 349	4		8-7914-290349		
30.0							30.0 x 349	4		8-7914-300349		
31.0							31.0 x 349	4		8-7914-310349		
32.0							32.0 x 349	4		8-7914-320349		
33.0							33.0 x 349	4		8-7914-330349		
34.0							34.0 x 349	4		8-7914-340349		
35.0							35.0 x 349	4		8-7914-350349		
36.0							36.0 x 349	4		8-7914-360349		
37.0							37.0 x 349	4		8-7914-370349		
38.0							38.0 x 349	4		8-7914-380349		
39.0							39.0 x 349	4		8-7914-390349		
40.0							40.0 x 349	4		8-7914-400349		

accessories	SW	order-no.	accessories	MORSE	order-no.	accessories	MORSE	order-no.
wrench	19	7-0894-19000	drill drift 4	4	W02679004	drill drift 1	1 + 2	W02679002
						drill drift 3	3	W02679003

TAP



screw	pull stud - A19 order-no.	tapping chuck				BILZ-insert			tap	
		WFLK	A	SK	order-no.	screw	type	order-no.	screw	order-no.
M8	8-9041-131190	225	126	40	8-9041-004200	M8	WESN2B-120	8-9041-040801	M8	8-9043-080000
M10						M10	WESN2B-120	8-9041-041001	M10	8-9043-100000
M12						M12	WESN2B-100	8-9041-041200	M12	8-9043-120000
M14						M14	WESN2B-100	8-9041-041400	M14	8-9043-140000
M16						M16	WESN2B-100	8-9041-041600	M16	8-9043-160000
M18						M18	WESN2B-100	8-9041-041800	M18	8-9043-180000
M20						M20	WESN2B-100	8-9041-042000	M20	8-9043-200000
M22						M22	WES3B	W06033444	M22	8-9043-220000
M24						M24	WES3B	W06033441	M24	8-9043-240000
M27						M27	WES3B	W06033442	M27	8-9043-270000
M30	M30	WES3B	W06033443	M30	8-9043-300000					

accessories	SW	order-no.
wrench	19	7-0894-19000

MILLING CUTTER



cutter	pull stud - A19 order-no.	tool holder					solid carbide cutter			
		name	A	form	order-no.		Ø	KSF	order-no.	
6.0	8-9041-131190	SK40-WD06	200	ADB	8-9041-306062	A	10.0	KSF	8-9047-150100	
8.0		SK40-WD08	200	ADB	8-9041-306082					
10.0		SK40-WD10	200	ADB	8-9041-306102					
			SK40-WD12	230	ADB	8-9041-306103				
			(at Y-axis on 0)							
12.0			SK40-WD12	100	ADB	8-9041-306121	B	12.0	KSF	8-9047-150120
13.5			SK40-WD12	200	ADB	8-9041-306122				
			SK40-WD12	230	ADB	8-9041-306123				
			(at Y-axis on 0)							
14.0			SK40-WD14	200	ADB	8-9041-306142	C	14.0	KSF	8-9047-150140
			SK40-WD14	230	ADB	8-9041-306143				
			(at Y-axis on 0)							
16.0		SK40-WD16	100	ADB	8-9041-306161	D	16.0	KSF	8-9047-150160	
		SK40-WD16	200	ADB	8-9041-306162					
		SK40-WD16	230	ADB	8-9041-306163					
		(at Y-axis on 0)								
18.0		SK40-WD18	200	ADB	8-9041-306182	E	18.0	KSF	8-9047-150180	
		SK40-WD18	230	ADB	8-9041-306183					
		(at Y-axis on 0)								
20.0		SK40-WD20	100	ADB	8-9041-306201		20.0	KSF	8-9047-150200	
		SK40-WD20	200	ADB	8-9041-306202					

accessories	SW	order-no.
Schraubenschlüssel	19	7-0894-19000

set screw			
screw	amount	order-no.	
M8 x 10	2x	7-0916-081000	A
M10 x 12		7-0916-101200	B
M12 x 16		7-0916-121600	C
M14 x 16		7-0916-141600	D
M16 x 16	2x	7-0916-161600	E

pin spanner		
SW	order-no.	
4	7-0911-04000	A
5	7-0911-05000	B
6	7-0911-06000	C
8	7-0911-08000	D; E

ORIGINAL KALTENBACH TOOLS: APPLY AND PRODUCE

- ▶ SAW BLADES
- ▶ SAW BANDS
- ▶ DRILL TOOLS
- ▶ CUTTING TOOLS
- ▶ CUTTING TORCHES
- ▶ SHEAR UNIT

For further information and our foreign affiliates
please visit:

WWW.KALTENBACH.COM

Product videos:

WWW.YOUTUBE.COM/KALTENBACHGROUP

Follow us on LinkedIn:

WWW.LINKEDIN.COM/COMPANY/KALTENBACH



KALTENBACH GMBH + CO. KG

Blasiring 4

D-79539 Lörrach

phone: +49 7621/175 - 0

e-Mail: info@kaltenbach.de

www.kaltenbach.com